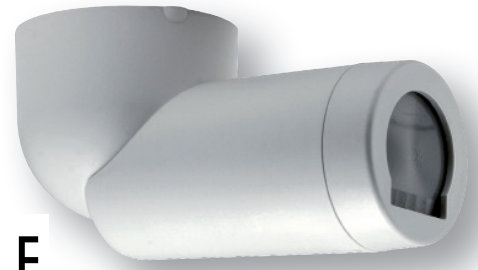


ML-CEDRPLR

Plug-in Directional Passive Infra Red (PIR) Occupancy Detector & Photocell

Input: 100-240 Vac 50/60Hz



PLEASE READ THESE INSTRUCTIONS BEFORE INSTALLING THE PRODUCT
NOTE: ML-CEDRPLR is only compatible to work with MESHLE enabled equipment

This directional long range ML-CEDRPLR can plug into a ceiling mounted socket (not included) - DANLERS Product Code: ML-CESO. The socket can be mounted onto an appropriate BESA box or pattress box. Configurable via the free to download MESHLE APP on Google Play or Apple APP Store.

INSTALLATION

To be installed by a competent person with reference to BS 7671 or equivalent local standards. If in doubt consult a qualified electrician.

- Plan where the ML-CEDRPLR is to be located (see diagram 1). Switch off supply and check for hidden cables and pipes.
- The ML-CEDRPLR plugs into a ceiling mounted socket (not included) - DANLERS Product Code: ML-CESO.
- The ML-CEDRPLR should be connected as shown in diagram 2:
L - Live in. N - Neutral in.

OPERATION

To check the operation of the ML-CEDRPLR:

- Turn on the supply then after 20 seconds if the sensor has recognised movement of a person within its zone of detection the integral red LED on ML-CEDRPLR will stay illuminated for 4 seconds before the red LED turns off.
- Thereafter, every time movement is detected by ML-CEDRPLR the integral red LED will stay illuminated for 4 seconds.

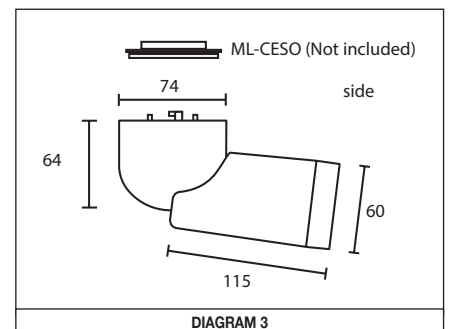
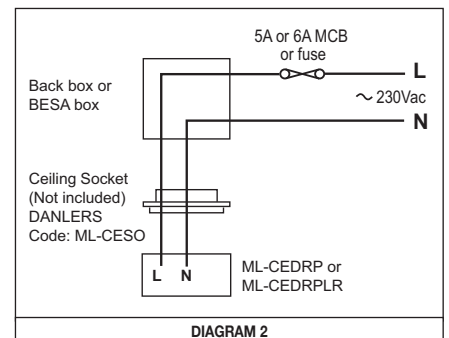
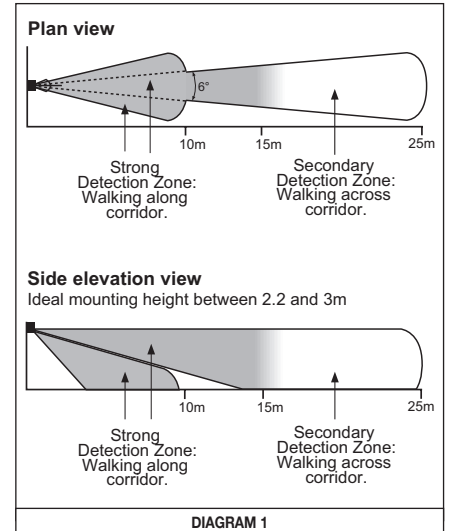
The control also features adjustable time out (time lag) control and daylight threshold control which are configured by the MESHLE APP.

PRECAUTIONS

- Do not place the ML-CEDRPLR near heat sources, fans or in ventilated ceiling voids.
- ML-CEDRPLR can be wired in parallel (sharing the same Live and Neutral).
- Do not place close to, or positioned such that, any light source points directly into the ML-CEDRPLR.
- Ensure wires and cables are securely held within the connection terminals.
- The ML-CEDRPLR should be protected by a 5 or 6 Ampere mcb or fuse.
- Disconnect the ML-CEDRPLR from the circuit before performing insulation testing of the wiring circuit.**

TECHNICAL DETAILS

| INPUT | |
|---|---|
| Voltage: | 100 - 240Vac |
| Frequency: | 50/60Hz |
| Max. mains current: | 20mA |
| Standby current: | 14mA |
| RADIO TRANSCIEVER | |
| Operating frequencies: | 2.4... 2,483 GHz |
| Max. output power: | +4 dBm |
| LUX PARAMETERS | |
| Range: | 5 - 2000 lux |
| OPERATING CONDITIONS | |
| Note: The temperature difference between the detection target and the background must be at least 4 °C. | |
| Ambient temperature: | -20... +40 °C (out 20mA) |
| Storage temperature: | -25... +75 °C |
| Max. relative humidity: | 0... 80%, non cond. |
| CONNECTORS | |
| Terminal block Wire size: | 0.5mm ² - 2.5mm ² solid or stranded |
| Wire strip length: | 6-7mm |
| Tightening torque: | 0,4 Nm/4 Kgf.cm |
| MECHANICAL DATA | |
| Dimensions: | 74mm x 90mm x 152mm (adjustable) |
| Weight: | 172g (unpacked) |
| Degree of protection: | IP20 |
| Protection class: | Built-in Class 2 |
| Material (casing) | Flame-retardant polycarbonate |
| Finish / Colour | Matt /White (RAL 9003) |
| Protection class: | Built-in Class 2 |
| CONFORMITY AND STANDARDS | |
| EMC emission: EN 301 489-1 V2.2.0, EN 301 489-17 V3.1.1, EN 55032: 2015, EN61000-3-2: 2014, EN61000-3-3: 2013 | |
| EMC immunity: EN 301 489-1 V2.2.0, EN 301 489-17 V3.1.1 | |
| Environment: Complies with WEEE and RoHS directives | |
| CB scheme: IEC60669-1:1998, IEC60669-1:1998/AMD1:1999, IEC60669-1:1998/AMD2:2006, IEC60669-2:2002, IEC60669-2-1:2002/AMD1:2008, | |



5 YEAR WARRANTY

ML-CEDRPLR comes with a 5 year warranty from the date of manufacture and is CE marked.



DANLERS Limited, Vincients Road, CHIPPENHAM, Wiltshire, SN14 6NQ, UK.
Telephone: +44 (0)1249 443377 Fax: +44 (0)1249 443388 E-mail: sales@danlers.co.uk
www.danlers.co.uk

Company Registered Number 2570169 VAT Registration Number 543 5491 38

DANLERS